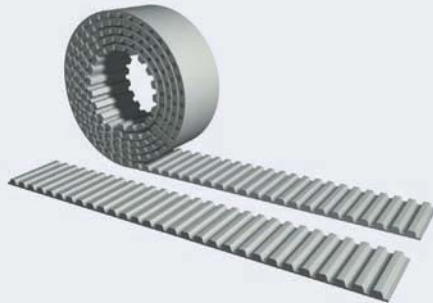


POLYURETHANE TIMING BELTS

TIMING BELT VERSIONS – CODES

Open Ended – Code “M” –

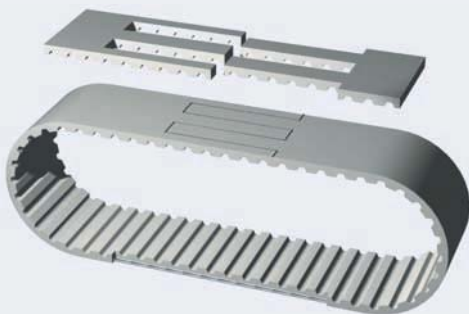


BRECO M timing belts are manufactured as open ended belts with bifilar, parallel tension members. The most common application is linear drives, in which rotary motor motion is translated into linear movement.

- High speed, up to 80 m/s
- High spring rate
- Any length available
- Various polyurethane materials available

Applications: Linear Drives

Spliced and Welded Endless – Code “V” –



BRECO V timing belts are spliced and welded endless from open ended roll stock. The timing belt ends are joined together in a heat welding process. Virtually any length is possible and can be determined in one tooth increments. One half of the tension members transmit load in the weld area. Preferred for conveying belts, profiled belts, covered belts and general purpose applications.

- Can be profiled and machined
- Any length available
- Many facings are offered
- Various polyurethane materials available

Applications: Conveying

Truly Endless BRECOFLEX – Code “BFX” –



BRECOFLEX BFX versions are manufactured as truly endless timing belts resulting in timing belts with no interruptions or joints. Two bifilar tension members are helically wound throughout the timing belt for superior strength and true tracking. All tension members carry full load throughout the entire timing belt length.

- High speed, up to 80 m/s
- High strength, up to 200 kW (275 hp)
- Wide range of standard sizes
- Long lengths available (up to 22 meters)

Applications: Power Transmission